



Rhode Island State Referee Committee

www.risrc.net



ITINERARY

- SuperLiga
- Adult leagues
- Referee Abuse
- Law change reviews
- COVID policies



SuperLiga



SuperLiga Quick Reference

	U8	U10	U12	U14	U16	U19
Number of Officials	1	3	3	3	3	3
Duration	4 x 12 min	2 x 25 min	2 x 30 min	2 x 35 min	2 x 40 min	2 x 45 min
Ball Size	3	4	4	5	5	5
Number of Players	4 / team	7 / team	9 / team	11 / team	11 / team	11 / team
Subs	On the fly	Goal	Goal	Goal	Goal	Goal
		Goal Kick	Goal Kick	Goal Kick	Goal Kick	Goal Kick
		Throw-in *	Throw-in *	Throw-in *	Throw-in *	Throw-in *
		Injury (1)	Injury (1)	Injury (1)	Injury (1)	Injury (1)
		Caution (1)	Caution (1)	Caution (1)	Caution (1)	Caution (1)



SuperLiga Quick Reference

Special Rules

- U8: No heading
- U10: No heading, Build-out Line
- U11: No heading

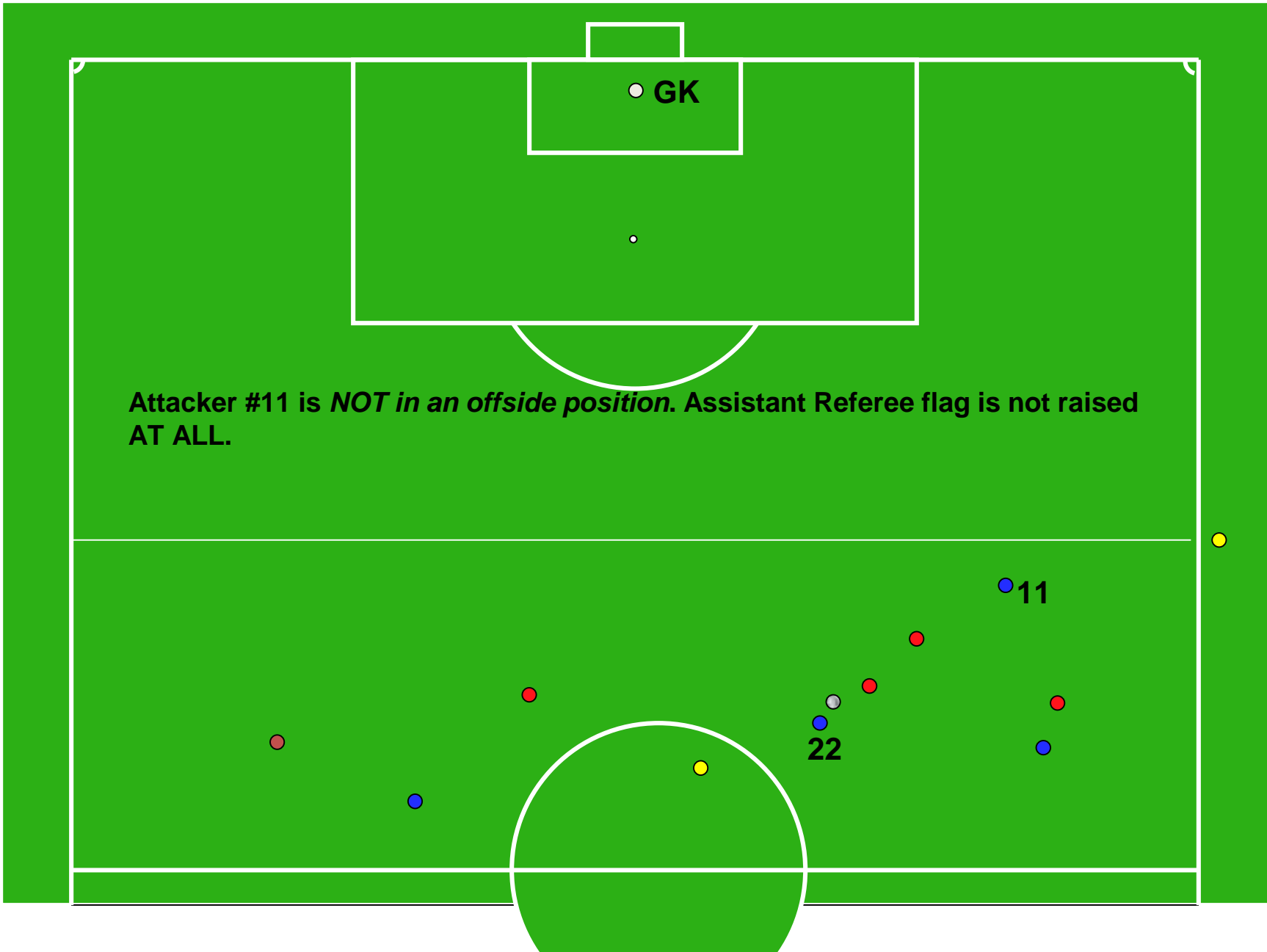
Teams may use Virtual Passes



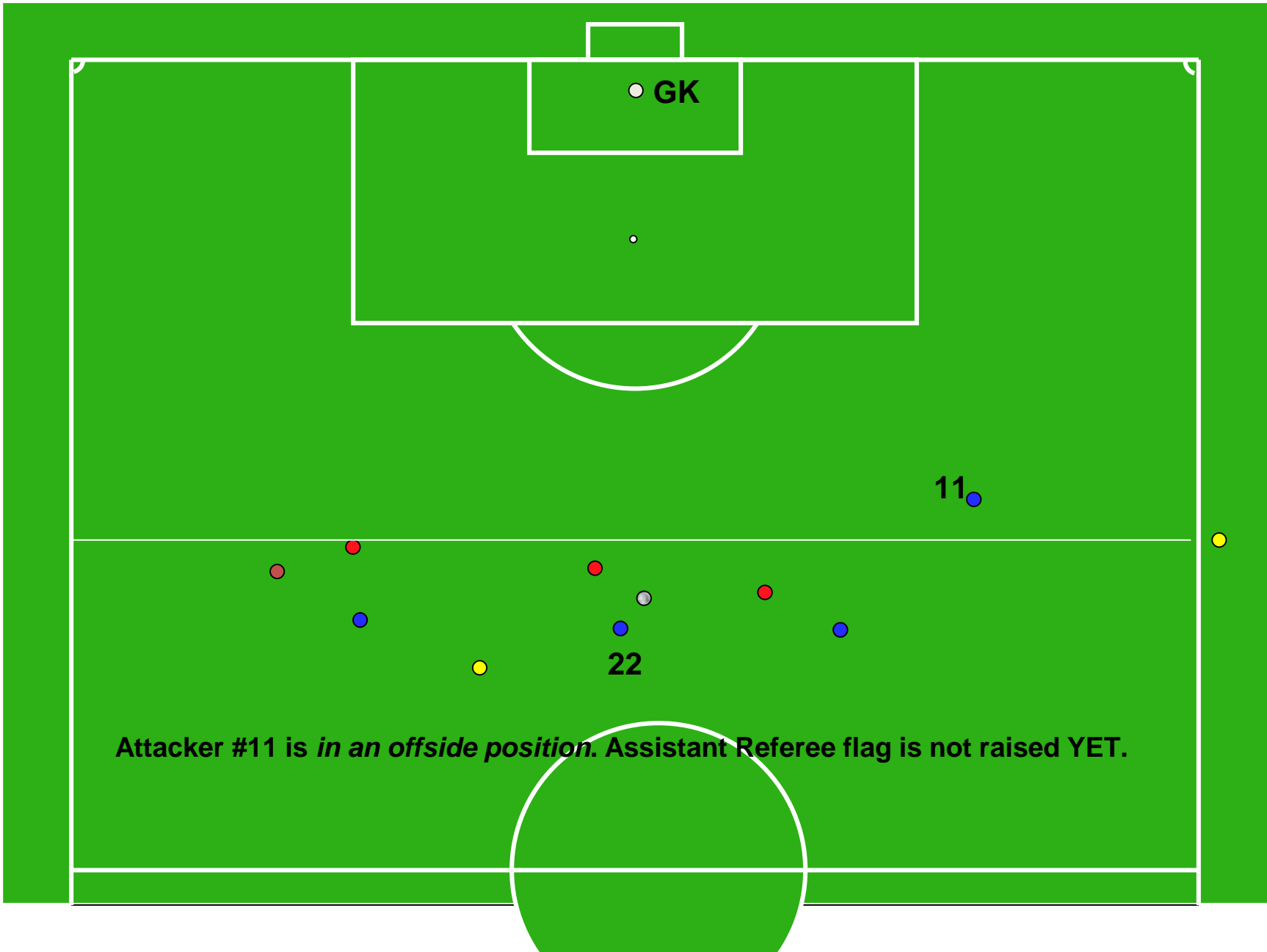
SuperLiga Quick Reference

The Build-out Line

- Goalkeeper in possession OR a goal kick, opposing team moves beyond BOL
- Goalkeeper must release the ball to a teammate by throwing it (cannot be punted)
- Once ball is kicked / released, BOL restriction lifted



Attacker #11 is *NOT* in an offside position. Assistant Referee flag is not raised AT ALL.



GK

11

22

Attacker #11 is *in an offside position*. Assistant Referee flag is not raised YET.



Questions?



Adult Leagues



Referee Abuse



Referee Abuse

- Referee abuse is an intentional act which creates apprehension, implies or threatens physical harm to a referee or the referee's property or equipment
- Referee abuse can be carried out by actions, threats or harassment



Referee Abuse

Things to remember

- Discuss with the ARs what they should look for & do regarding coach/bench conduct
- Introduce yourselves to the coaches
- The term “Team Officials” refers to any non-playing bench personnel (coaches, assistant coaches, team managers)
- Team Officials are expected to act responsibly - when they stop acting responsible they have to be dealt with



Referee Abuse

ASK

How do we speak to the Team Official when we need him/her to calm down

- Quick word as you pass the bench – “**Please** coach”
- AR can address the coach – “Can I help?”, but do not get distracted from game
- At a stoppage, speak to the coach (if you can)
- Asking is more of a nicer “**please**” type conversation. You recognize the behavior and are asking for decorum



Referee Abuse

What You Can Say

- During play
 - “I hear you, coach – thank you”
 - “Coach, I understand you are upset but **please** calm down”
 - “I can see you don’t agree with the call, **please** don’t scream.”
- Standing shoulder to shoulder (while play is stopped)
 - “I can give you 5 seconds to talk if you can be calm.”
 - “Coach, **please** talk to “your assistant” or “that parent”, he/she is interfering with our ability to officiate”.



Referee Abuse

What You Can't Say

- Curse, use abusive or insulting language:
“Coach, shut up and sit down”
- Criticize the members of the referee team:
“I agree – he’s having a bad day”
- Attack or criticize the coach or his team
- Say what you would have done in that situation
- Make physical contact with bench personnel
- Use phrases that invite further debate or negative discussion



Referee Abuse

WARN

- “I’m sorry Coach, but the behavior must stop.”
- “You have expressed your opinion in a way that is interfering with the game.”
- “If I have to address this situation again, I will have to Caution you.”

YOU MUST BE PREPARED TO BACK UP YOUR WORDS!



Referee Abuse

CAUTION

The Team Official continues to be a problem

- At a stoppage, hold up the restart, walk slowly towards the coach, stay 10 yards away from coach and on the field
- Firm and calm tone of voice
- “Sir / Madam – you are being cautioned. If I have to talk to you again, you will be removed.”

SHOW THE YELLOW CARD!!!





Referee Abuse

SEND OFF!

The Team Official has disregarded your warnings and continues to be problem or has totally crossed into dangerous territory.

SHOW THE RED CARD!!!





Referee Abuse

Mechanics

How should I handle the dismissal?

- Stop play (if it's not already stopped)
- Approach team official at a distance of 5 to 10 yards
- Hold red card straight up in the air 3 to 5 seconds
- In a strong, calm voice say, "Sir / Madam, please leave the field now."
- Point towards parking lot
- Respond to further comments with only: "Please leave. The game will not continue until you leave."
- If the person refuses to leave your sight, abandon the match.

YOU MUST SHOW THE RED CARD AND REPORT THE INCIDENT– OR THE LEAGUE CANNOT DEAL WITH THE COACH!



Referee Abuse

Don't let coaches intimidate you

Tips for newer referees

- Have one or both ARs accompany you
- You can seek out responsible adult to help:
 - Referee coordinator/mentor/parent at venue
 - Other coach
- “Coach – if you do not leave, I will have no choice but to abandon this game.”
- If still out of hand, abandon match **after** showing red card
 - Stay together until all referees have returned to safety.

YOU MUST SHOW THE RED CARD AND REPORT THE INCIDENT– OR THE LEAGUE CANNOT DEAL WITH THE COACH!



Referee Abuse

Restarting after a Dismissal

- Do not restart until person has left your sight and sound
- If no coaches left, you **must** end the game
 - Another adult with a valid coach pass from same club can become coach
 - Add them to the roster
- If the ball was in play when you stopped?
 - Dropped ball from where it was
- If the ball was out of play?
 - Whatever the restart would have been!



Referee Abuse

Reporting Abuse is necessary

- Report abuse to your assignor
- Fill out game report
- Go to RISRC.net, click on “Problem Coach” link
- Email sra@risrc.net and sdi@risrc.net



Questions?



2019 / 2020 / 2021 Law Changes Review



Law Review

Dropped Ball

- If you have a dropped ball inside a penalty area, the ball will be dropped directly for the goalkeeper
- For all other instances, the ball will be dropped to ONE player (the team that had possession)
- All other players will be at least 4 yards away



Law Review

Free Kicks

- If a wall of three or more defenders is formed, no attackers may be within 1 yard of that wall



Law Review

Goal Kicks Free Kicks from inside Pen. Area

- When the defending team takes a goal kick or a free kick from inside their own penalty area, the ball is **IN PLAY** once it has been kicked and it moves – the ball **DOES NOT** have to leave the penalty area before it is IN PLAY



Law Review

Handball

- The following situations, even if accidental, play will be stopped for a direct free kick:
 - The ball goes into the goal after touching an attacking player's hand or arm
 - A player gains possession of the ball after it has touched their hand/arm and then scores or creates a goal-scoring opportunity



Law Review

Handball

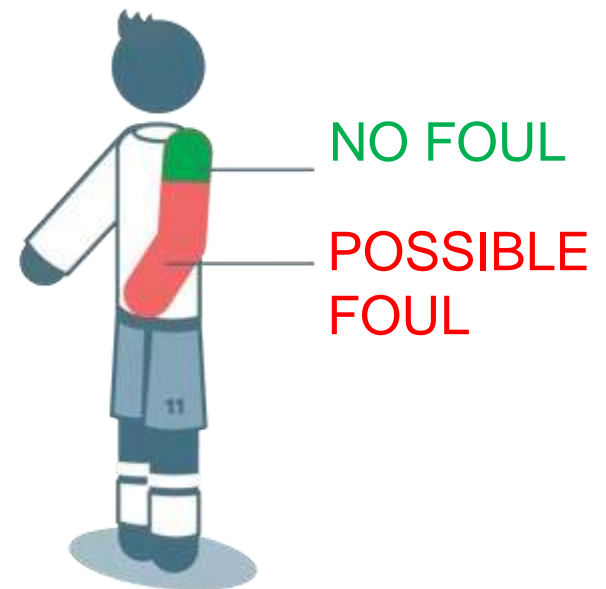
This concept includes an opportunity to score immediately after the ball has made contact with a team mate's hand/arm.

- if the ball touches an attacking player's hand/arm and then goes to another attacker and a goal or scoring opportunity occurs immediately, this is a handball offence
- it is not an offence if, after an accidental handball, the ball travels some distance or there are several passes or there is a notable 'time interval' between the 'handball' and the goal or scoring opportunity.

The key word when applying this part of the Law is immediately.

Wording has been added to clarify that, when considering possible handball offences, the shoulder is not part of the arm - the arm starts at the bottom/end of the armpit, as shown in the diagram in Law 12.

For the purposes of determining handball offences, the upper boundary of the arm is in line with the bottom of the armpit.





Law Review

Handball

- The following situations will **usually not** be a foul:
 - The ball touches a player's hand/arm directly from their own head/body/foot OR another player's head/body/foot who is CLOSE (did the player have time to react?)
 - The ball touches a player's hand/arm which is close to their body and has not made the body unnaturally bigger



Law Review

Handball

- The following situations will **usually not** be a foul:
 - If a player is FALLING and the ball touches the hand/arm when it is between their body and the ground (player is bracing for the fall)
 - If a goalkeeper attempts to 'clear' a ball (coming from a teammate) but the 'clearance' fails, the goalkeeper MAY handle the ball



Law Review

Kick-off

- The team that wins the coin toss can now chose to take the kick-off **OR** choose a goal to attack
- If that team chooses possession of the ball, the other team may choose which goal to attack



Law Review

Penalty Kick

- The player taking the kick can have quick medical treatment before taking the kick
- The defending goalkeeper must not make the goal or net move
- The defending goalkeeper must have at least part of one foot on/in line with the goal line when the kick is taken



Law Review

Substitutes

- A player being substituted may leave the field from any location – the player does not have to cross the field to reach the team's bench
- SuperLiga only – players leaving the field should not do so on spectator touch line (for their own safety)



Questions?



COVID Policies



COVID Policies

(1) Control what YOU can control

- If you have any health concerns, **DO NOT ACCEPT THE GAME ASSIGNMENT.**
- **There will be no stigma attached to declining any match at any time, and a referee need not provide a reason why they are declining any match, or any health information at any time**
- League may want a break mid-way through each half



COVID Policies

(1) Control what YOU can control

- TRY to stay 6 feet from the players, even when the ball is in play
- Use an electronic whistle OR a normal whistle under your mask
- Sportsmanship Card (for SuperLiga) read at midfield to captains and coaches
- Don't participate in handshake line after the game



COVID Policies

(2) Control the match with Common Sense

- All players, coaches, and referees **MUST** wear a mask
- If a player isn't wearing a mask correctly (covering mouth and nose) ask them to fix it. If they can't, ask them to leave the field **AT THE NEXT STOPPAGE** (treat the same way as if they weren't wearing shinguards)
- It's okay to "dip" the mask at a stoppage to get some air temporarily



COVID Policies

(3) Get Help if you need it

- Game may have a “COVID Coordinator”
- Ask coaches for help with spectators
- Tell the SRC and the League when something happens



COVID Policies

(4) Absolute last resort

- If something happens that you can't control which affects the safety of the players (or yourself) and you've tried asking for help, **TERMINATE THE MATCH**
- For example – a spectator within 6 feet of the field not wearing a mask
- Write down everything that happened in the game report and also tell a member of the SRC



Questions?